



# LoRa(WAN) RANGE



## M2M & IoT WIRELESS EXPERT

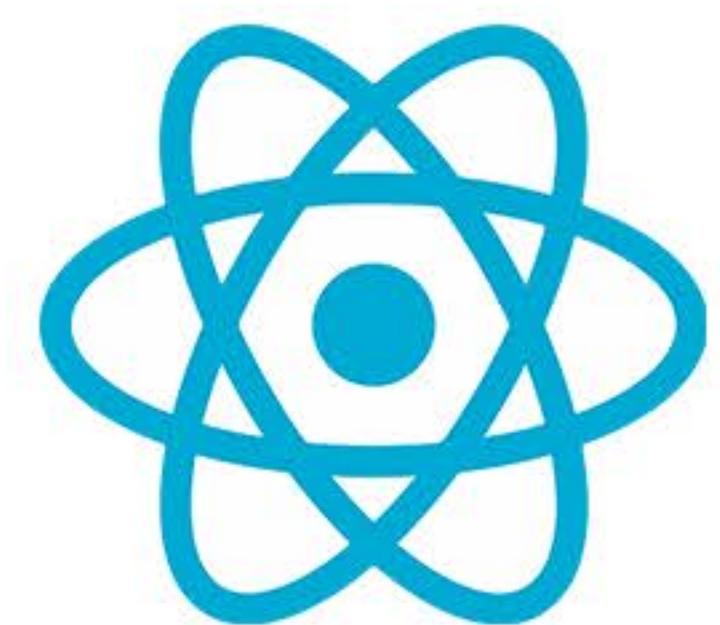
ENERGY EFFICIENCY | BUILDING MANAGEMENT SYSTEMS | RADIO COMMUNICATION



MEASURE



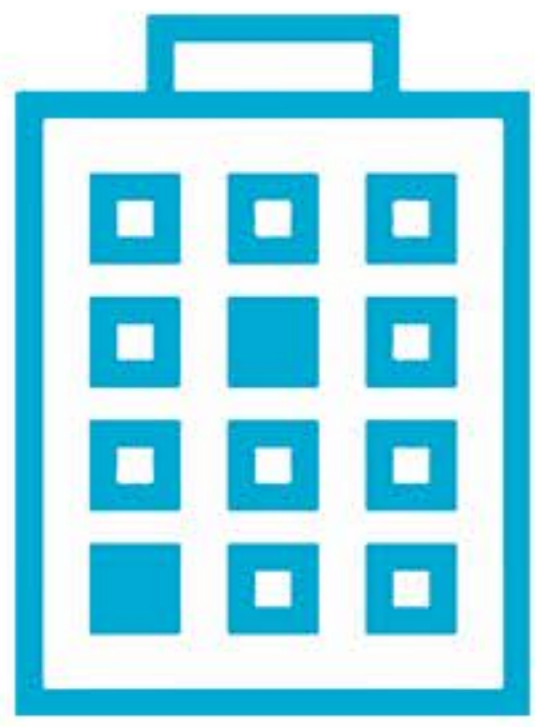
TRANSMIT



COLLECT

We provide strong added value radio devices that allow you to monitor your energy consumption.

Discover our entire LoRa(WAN) product range.



ENERGY EFFICIENCY



COMFORT



METERING



INDUSTRY

With over **10 years' experience** in the telecommunications field, Enless is recognised as a major manufacturer of M2M (Machine to Machine) and IoT (Internet of Things) **equipment for energy efficiency applications in buildings – smart building.**

With Enless, you can effectively monitor your building's energy **consumption with long-range/low energy radio products that are quick and easy to install.**

Our know-how with **LoRa(WAN)** technology allows us to reach a customer base of integrators, operators or equipment manufacturers looking for ready-to-use wireless products.

We provide a complete product offer for several targeted applications :

- **Comfort (CO2, VOC, Temperature, Humidity)**
- **Temperature monitoring**
- **Meter reading**
- **Industrial applications**



Different radio architectures are possible :

- LoRa Enless Wireless private mode
- LoRaWAN operated mode
- LoRaWAN private mode



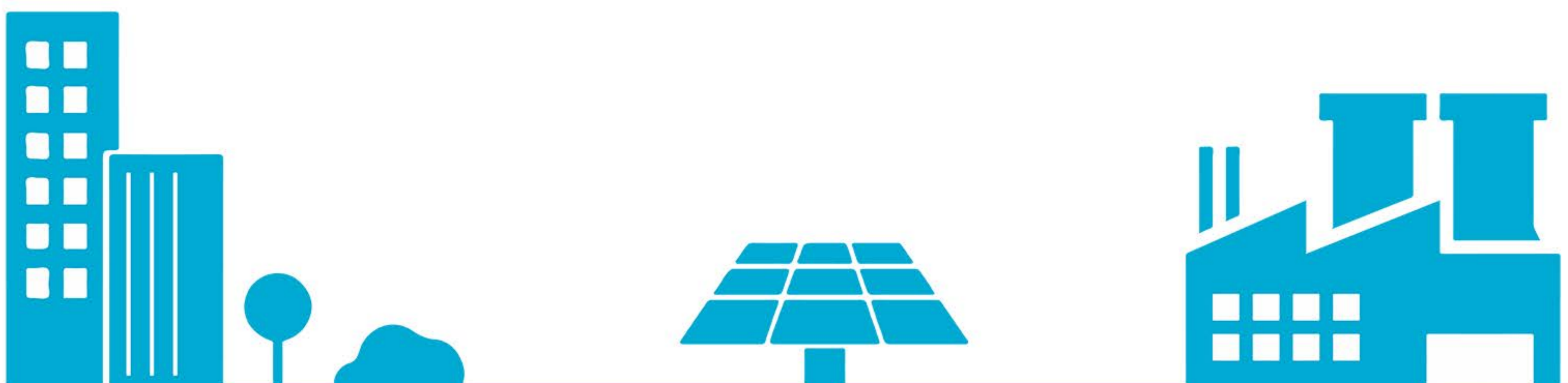
3km distance in an open field in LoRa Enless Wireless private mode



Very long battery autonomy



868MHz frequency usable in Europe



# Ambient air quality | Temperature monitoring



Ambient transmitters  
(CO<sub>2</sub> / VOC / Temperature / Humidity)



Temperature transmitter  
(internal sensor)



Temperature transmitters  
(Single or double PT1000 contact probe)

# Smart metering | Analog applications



Metering transmitters  
(Pulse / Pulse ATEX / LED)



Analog transmitter  
(4/20mA)



Contact transmitter  
(ON / OFF)

# Receivers | Repeater | Antenna

For use in LoRa private mode - Compatible with Enless transmitters only



Receivers



Signal repeater

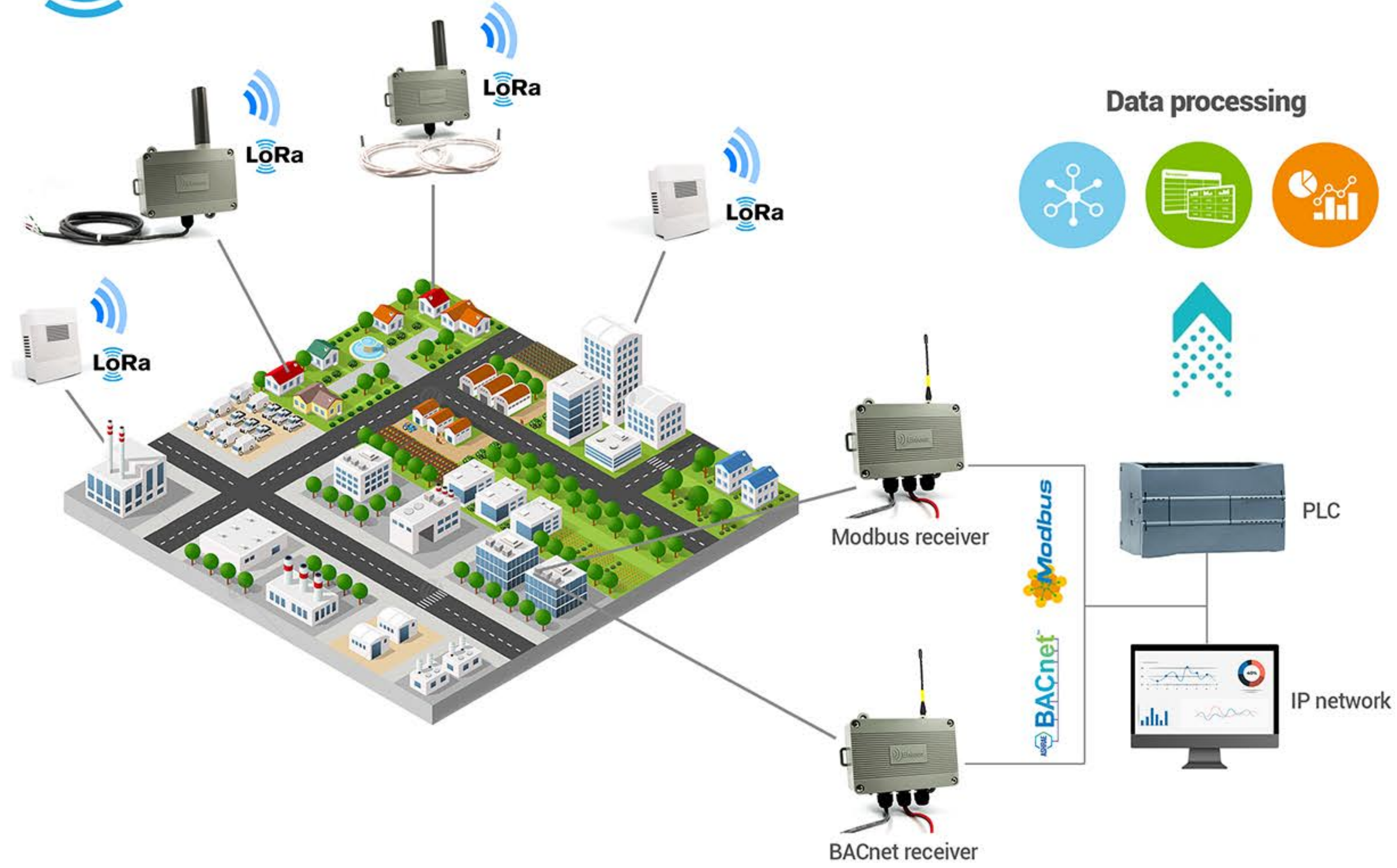


Long range antenna

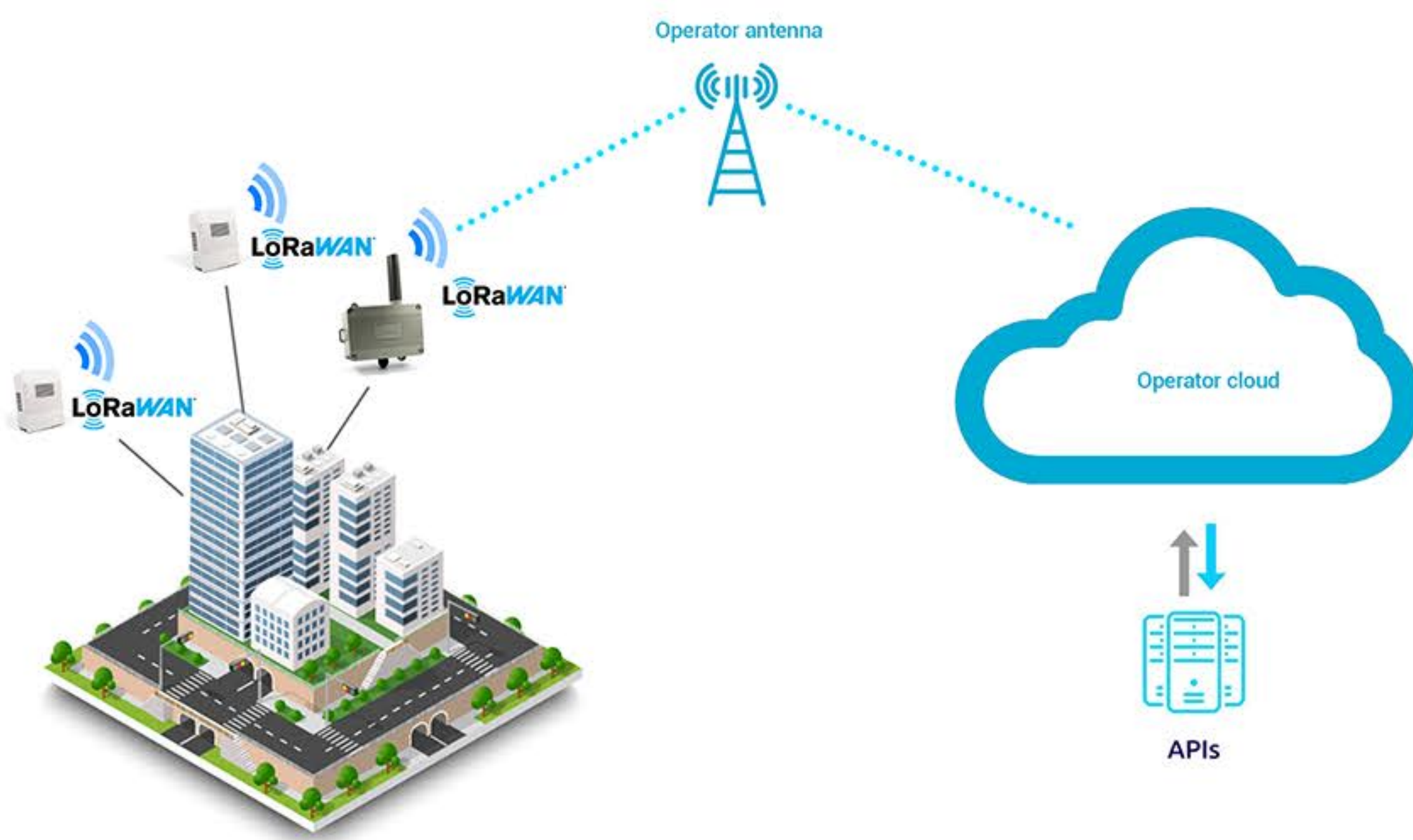
# The Enless Wireless LoRa(WAN) range fits LoRa and LoRaWAN modes

## LORA ENLESS WIRELESS PRIVATE MODE

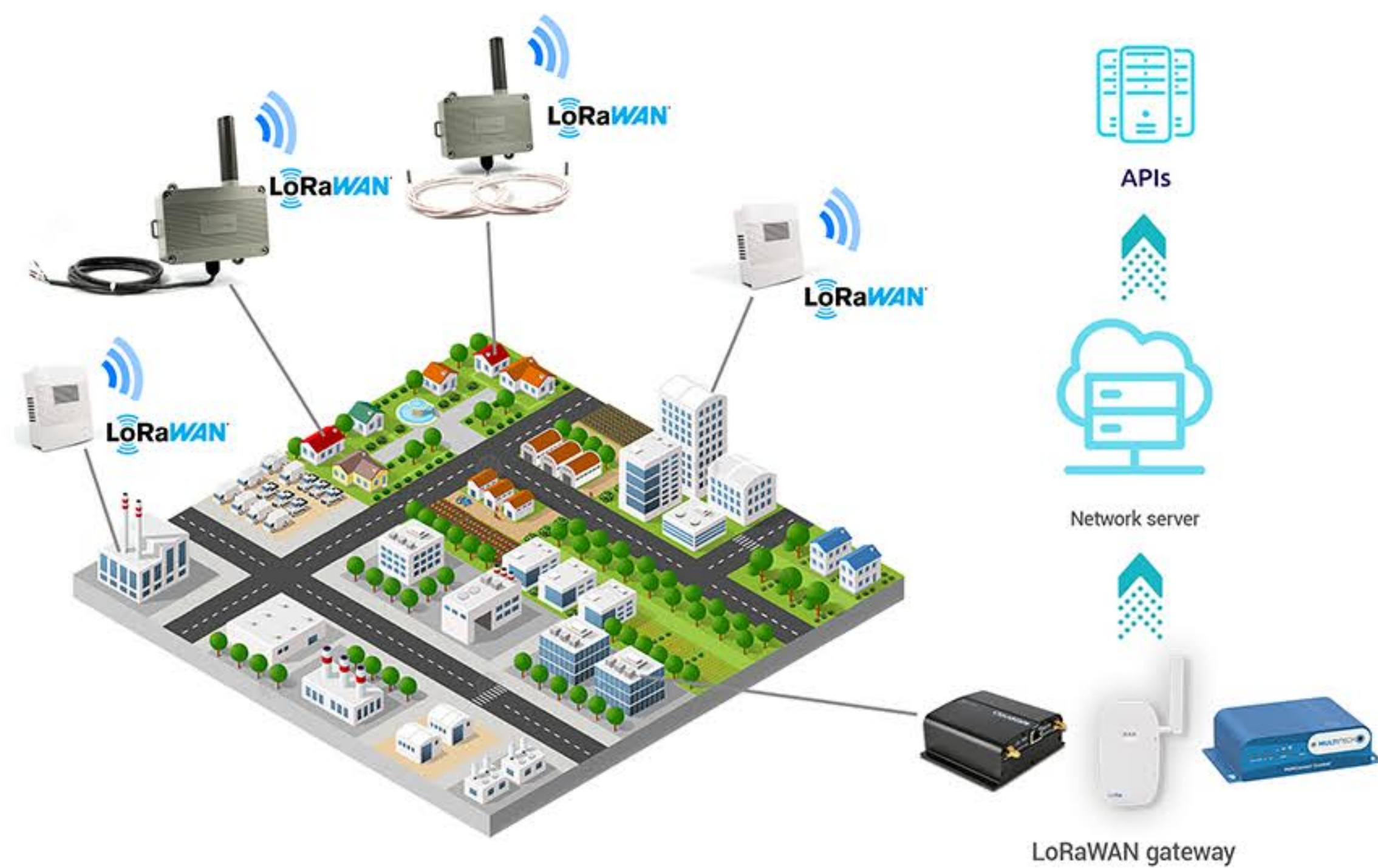
**LoRa™**



## LORAWAN OPERATED MODE



## LORAWAN PRIVATE MODE



## CONTACT US



6 Bis rue du Temple  
33000 - Bordeaux  
France



[www.enless-wireless.com](http://www.enless-wireless.com)



+33 (0)5 56 35 97 47



[contact@enless.fr](mailto:contact@enless.fr)